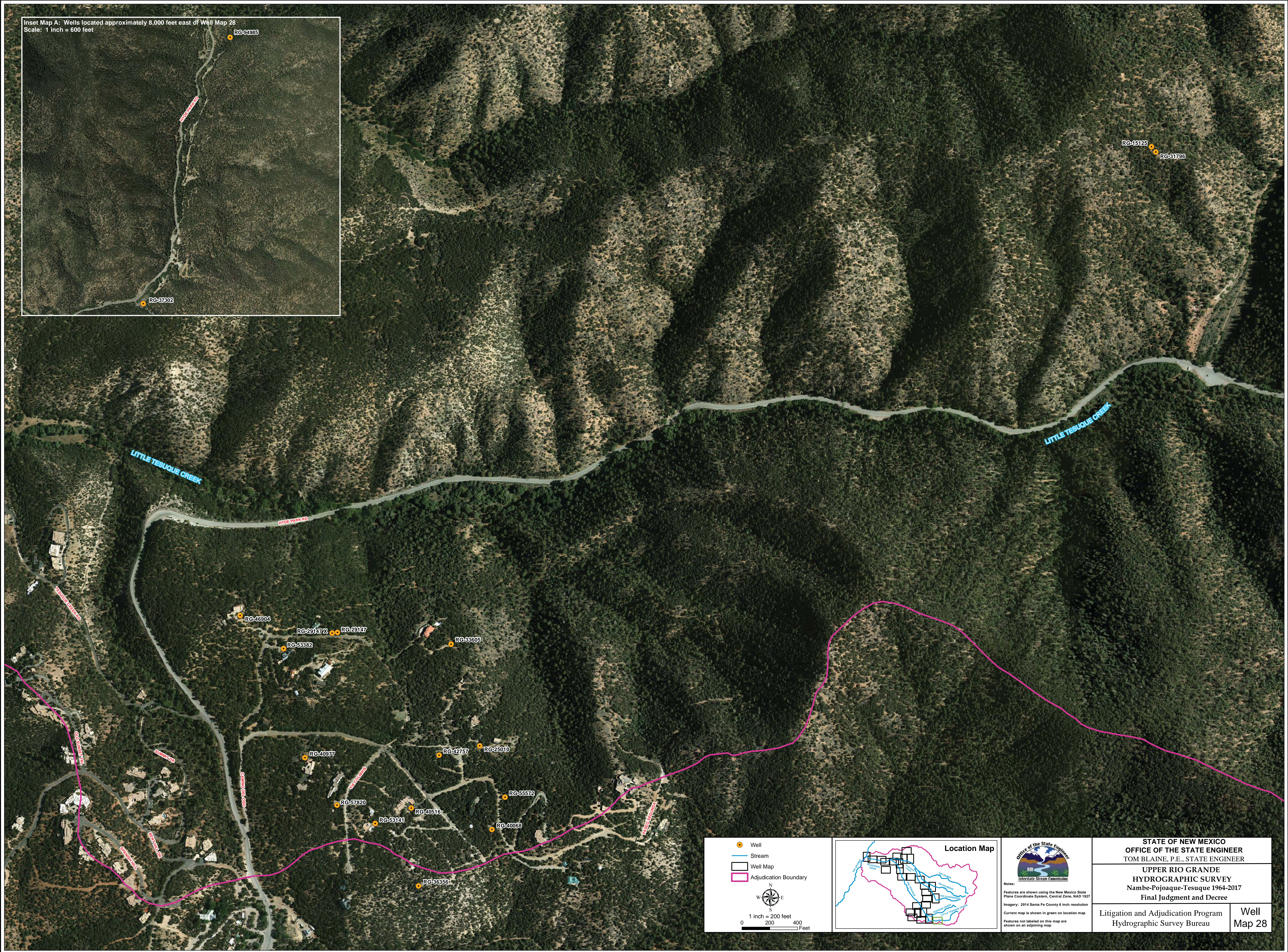
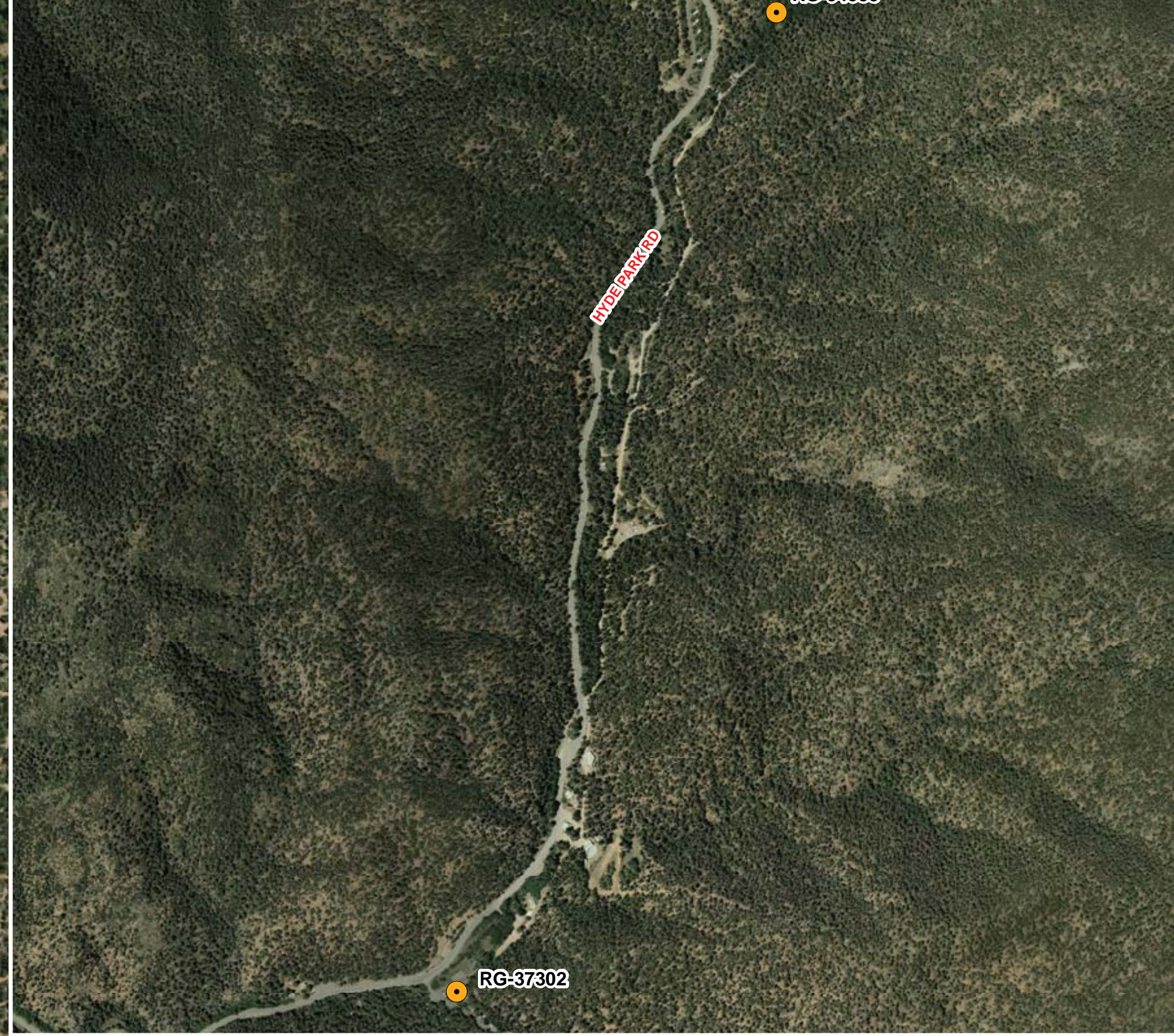
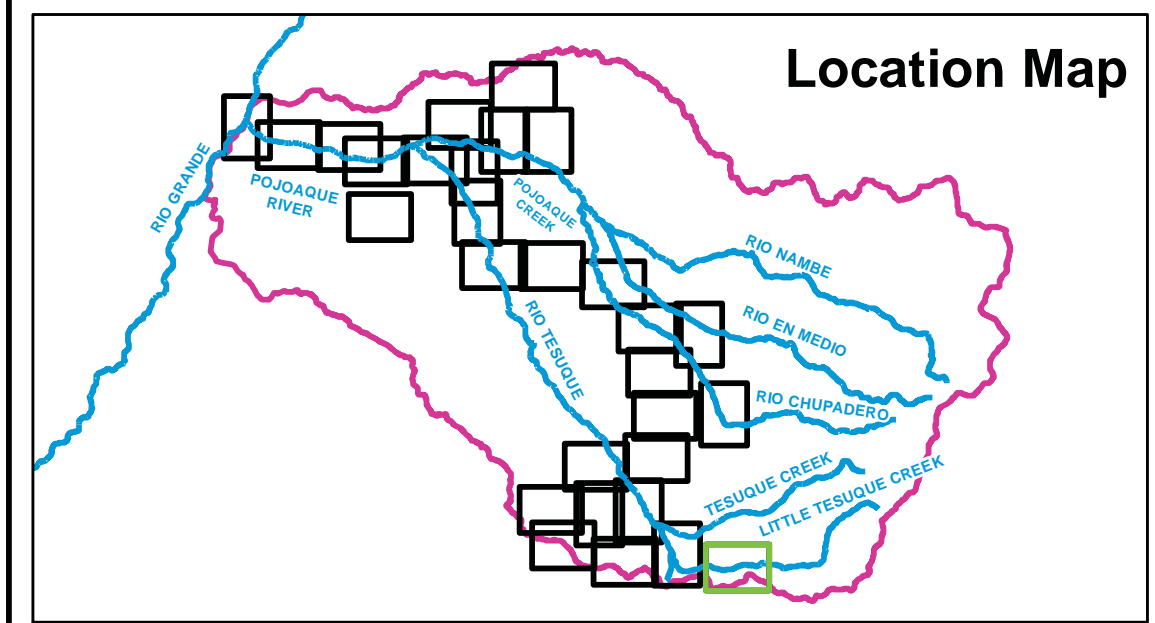


Inset Map A: Wells located approximately 8,000 feet east of Well Map 28
Scale: 1 inch = 600 feet



- Well
- Stream
- Well Map
- Adjudication Boundary

1 inch = 200 feet
0 200 400 Feet



Office of the State Engineer
Interstate Stream Commission

Notes:
Features are shown using the New Mexico State Plane Coordinate System, Central Zone, NAD 1927
Imagery: 2014 Santa Fe County 6 inch resolution
Current map is shown in green on location map
Features not labeled on this map are shown on an adjoining map

STATE OF NEW MEXICO
OFFICE OF THE STATE ENGINEER
TOM BLAINE, P.E., STATE ENGINEER

UPPER RIO GRANDE
HYDROGRAPHIC SURVEY
Nambu-Pojoaque-Tesuque 1964-2017
Final Judgment and Decree

Litigation and Adjudication Program
Hydrographic Survey Bureau

Well
Map 28